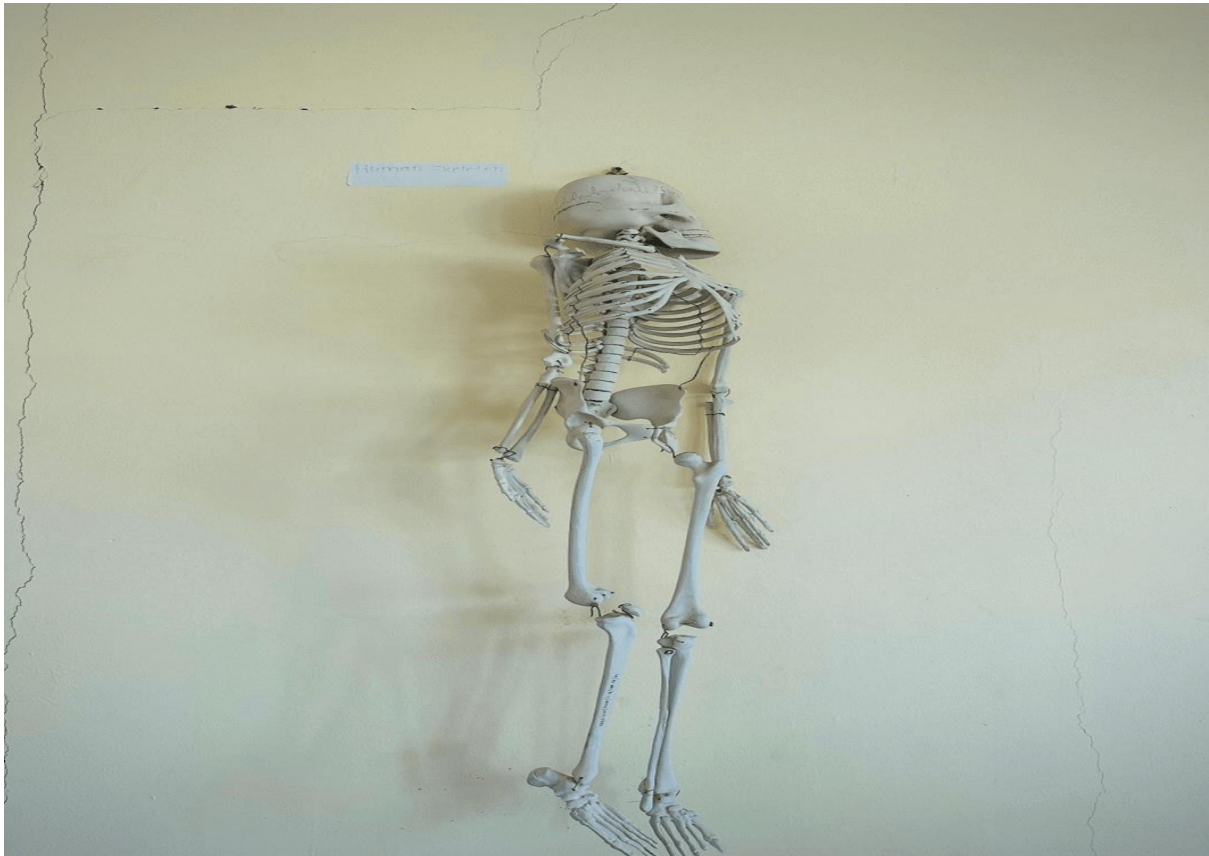


## Human Skeleton Articulated



A human skeleton articulated is a model where bones are connected in a way that mimics natural joint movement. It is used for anatomical study, medical education, and research to understand human bone structure. The skeleton includes 206 bones, with flexible joints to demonstrate motion and posture. Some models feature removable parts to study individual bones and their connections. It is commonly found in medical schools, biology labs, and physiotherapy training centers.